

Scyon™ Matrix™ cladding

What is it?

An exterior cladding system with a geometric expressed-joint look. Fast and simple to install, Scyon™ Matrix™ cladding is the commercial look without the commercial price tag.

Where do you use it?

In residential and medium-density applications wherever a modern design is required, including external walls in composite construction, upper storey and ground-level extensions, and internal feature walls.

What are the key benefits?

Simple to install .

Instead of needing the steel top hats associated with many commercial systems, Matrix™ cladding sheets are installed with Scyon™ cavity trim battens. The expressed joint is created easily using a 10mm packer.

Sheets are sanded smooth and pre-primed for fast paint application and a high-quality finish.

Design options.

Square and rectangular panels with an expressed joint mean a variety of looks can be created, from horizontal and vertical stripes to geometric patterns.

Sanded sheets give a flat, smooth finish and digital printing can add even more design options.

Matrix™ cladding's resistance to cracking, warping and swelling¹ means it can be painted both dark and light colours.

The option of brad nailing minimises visual interruption.

Matrix™ cladding may be specified for timber-framed or steel-framed structures.

Durability.

The Matrix™ cladding panels are sealed on all sides for durability and stability and the product has a 10-year product warranty when installed and maintained correctly¹.

Enhances energy efficiency.

When Matrix™ cladding is used with the right insulation (and in accordance with James Hardie's Wall System Thermal Performance Total R-Values Technical Supplement), an R-Value of up to 3.4 can be achieved for the wall.

¹ When installed and maintained correctly and to the extent set out in James Hardie's published literature current at the time of installation.

Available sizes

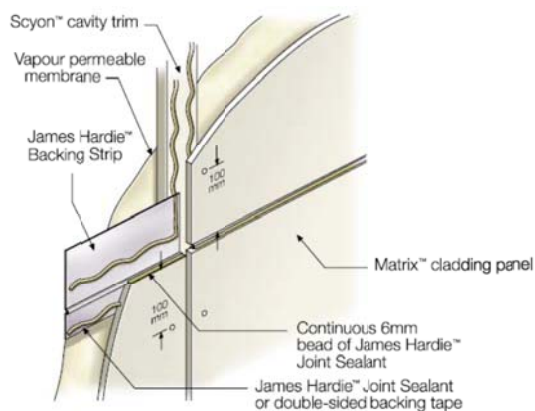
Scyon™ Matrix™ cladding

Length (mm)	Width (mm)	Thickness (mm)	Mass (kg/m ²)
1190	1190	8	18
2390	590		18
1790	890		20
2990	1190		45

Scyon™ cavity trim

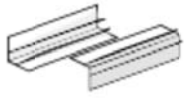
Length (mm)	Width (mm)	Thickness (mm)	Mass (kg)
2450	70	19	3.4

Matrix™ cladding installation



Accessories

JH Aluminium Snap On Corner (2-piece sets)



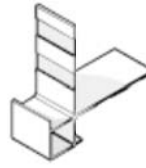
Ready to paint aluminium extrusion set, to be used with Scyon™ Axon™ cladding, HardiePlank™ weatherboard and PrimeLine® weatherboard, at internal and external corner junctions to conceal the board edge. 3000mm lengths.

James Hardie™ 9mm Aluminium Internal Corner



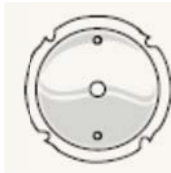
Ready to paint aluminium extrusion, to be used with EasyLap™ panel and Scyon™ Axon™ cladding, at internal corner junctions to conceal the board edge. 3000mm lengths.

James Hardie™ 9mm Aluminium External Corner



Ready to paint aluminium extrusion, to be used with EasyLap™ panel and Scyon™ Axon™ cladding, at external corner junctions to conceal the board edge. 3000mm lengths.

HardieBlade™ Saw Blade



A 185mm or 254mm diameter poly-diamond blade for fast and clean cutting of James Hardie fibre cement

James Hardie™ Joint Sealant



A general purpose, paintable, exterior grade polyurethane joint sealant.

HardieDrive™ Screws 32mm long



A class 3 finish self-tapping wing-tipped screw for fastening to 0.8mm to 1.6mm BTM steel frames

James Hardie™ 50mm wide Foam Back Sealing Tape



Self-adhesive foam tape to help improve water tightness with EasyLap™ panel and Scyon™ Axon™ cladding. It is applied under sheet joins to the vapour permeable membrane along the stud face. Roll, 25 metres long x 50mm wide x 1.6mm thick.