

## HardiePlank™ weatherboard

A no-fuss, site-painted weatherboard available in a range of different profiles, from contemporary to traditional. The range includes:

**HardiePlank™ Woodgrain.** Traditional woodgrain

**HardiePlank™ Smooth.** Modern straight lines

**HardiePlank™ Old Style.** A smooth surface and rebated edges to create shadow lines

**HardiePlank™ Rusticated.** Pre-primed with a subtle timber grain, and rebated edges to create shadow lines.

### Where do you use it?

As an external cladding in residential single and medium-density homes, including alterations and additions, where a cost-effective traditional or contemporary weatherboard look is required. Ideal for full wrap or composite construction designs on either timber or light gauge steel framed homes.

### What are the key benefits?

#### Design flexibility.

A wide variety of looks can be achieved with the varying profiles in the range.

#### Versatility.

It can also be used as bracing.

#### Security.

HardiePlank weatherboard is resistant to damage from termites, rot and fire.

A 25-year product warranty gives peace of mind.

### Available sizes

Profile	Width (mm)	Length (mm)	Thickness (mm)	Mass (kg/m <sup>2</sup> )
<b>Woodgrain</b>	230	4200	7.5	2.9
	300			3.8
<b>Smooth</b>	230	4200	7.5	2.9
	300			3.8
<b>Old Style</b>	205	4200	7.5	2.5
<b>Rusticated</b>	205			2.5

HardiePlank™ Woodgrain weatherboard with traditional woodgrain finish.



HardiePlank™ Smooth weatherboard with straight modern lines



**HardiePlank™ Old Style weatherboard**

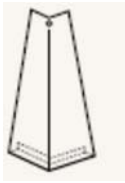


**HardiePlank™ Rusticated weatherboard**



## Accessories

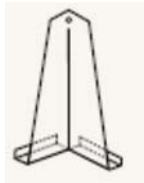
### HardiePlank™ Aluminium External Corner Soaker



A ready to paint aluminium corner soaker, to be used with HardiePlank™ weatherboard, at external corner junctions to conceal the board edge.

For: 230mm/300mm

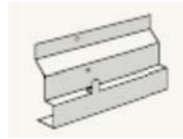
### HardiePlank™ Aluminium Internal Corner Soaker



A ready to paint aluminium corner soaker, to be used with HardiePlank™ weatherboard, at internal corner junctions to conceal the board edge.

For: 230mm/300mm

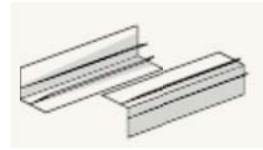
### HardiePlank™ Zinalume Footmould



A zinalume starter strip to be used with HardiePlank™ weatherboard to kick out the bottom row to the correct angle.

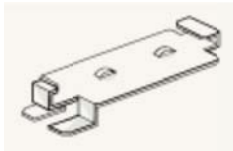
Length: 3000mm

### James Hardie™ Aluminium Snap On Corner



A ready to paint aluminium extrusion set, to be used with Scyon™ Axon™ cladding, HardiePlank™ weatherboard and PrimeLine® weatherboard, at internal and external corner junctions to conceal the board edge. Length: 3000mm (2 pieces per set).

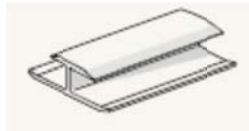
### HardiePlank™ Galvanised Soaker Jointer



A galvanised metal jointer used to join HardiePlank™ weatherboards. It's a concealed alternative to PVC jointers.

Sizes for: 205mm/230mm/300mm

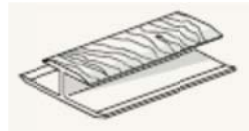
### HardiePlank™ Smooth PVC Jointer



A smooth PVC extrusion used to join HardiePlank™ weatherboards.

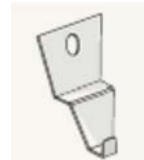
Sizes for: 230mm/300mm

### HardiePlank™ Woodgrain PVC Jointer



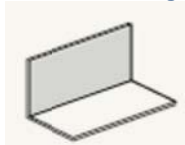
A woodgrain textured PVC extrusion used to join HardiePlank™ weatherboards. Sizes for: 230mm/300mm

### HardiePlank™ Galvanised Stud Clip



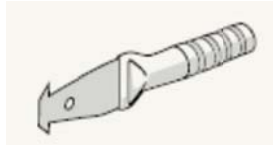
A galvanised metal stud clip to be used with HardiePlank™ weatherboard to automatically set a 25mm lap.

### James Hardie™ 75x75mm Colorbond® Corner Flashing



A Colorbond® corner flashing for use behind cladding at internal and external corners. Length: 3000mm

### James Hardie™ Score and Snap Knife



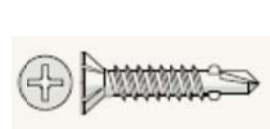
A tungsten tipped knife for scoring fibre cement sheets.

### James Hardie™ Joint Sealant



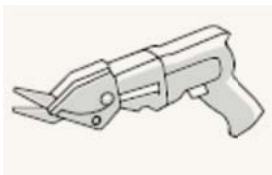
A general purpose, paintable, exterior grade polyurethane joint sealant.

### HardieDrive™ Screws 32mm long



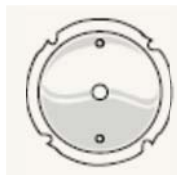
A class 3 finish self-tapping wing-tipped screw for fastening to 0.8mm to 1.6mm BTM steel frames

### James Hardie™ Fibreshears



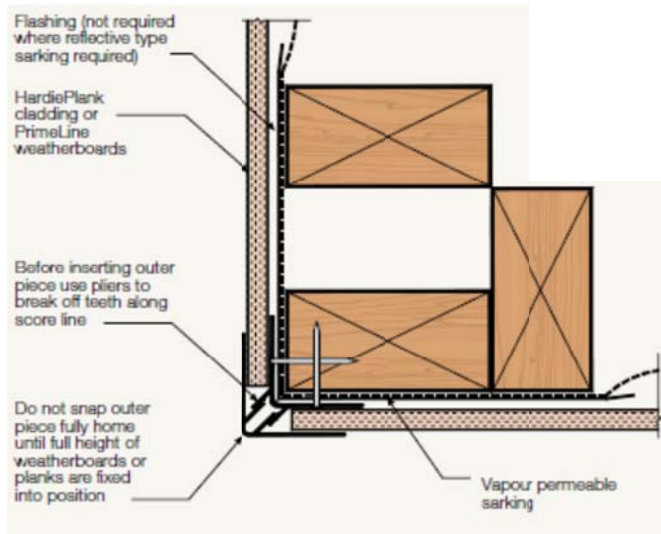
Electric tool for cutting fibre cement sheets.

### HardieBlade™ Saw Blade

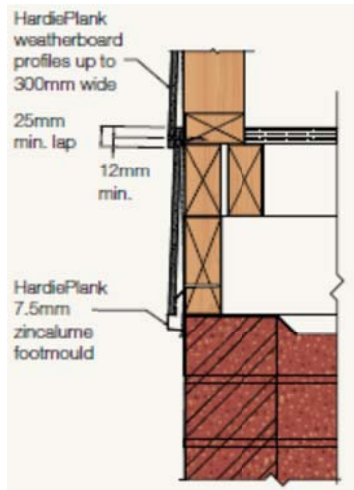


A 185mm or 254mm diameter poly-diamond blade for fast and clean cutting of James Hardie fibre cement

## External corner option



## Nail spacings and lap



## PVC jointer

